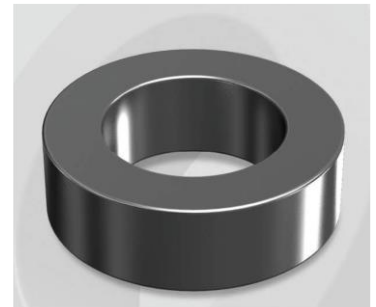


HP234060G

OD : 234

Electrical Characteristics

Material	Permeability (μ)	AL \pm 8% (nH/N ²)	DCB (% min) @ 100 Oe	Coreloss (mW/cm ² , max) @ 50kHz, 1000G
HP	60	51	46.0	200



Core Dimensions

Dimensions		Uncoated		Coated		Color	Packaging
		(mm)	(inch)	(mm)	(inch)		
OD	(Max)	23.57	0.928	24.30	0.957	Black	Box Qty = 750 pcs
ID	(min)	14.40	0.567	13.77	0.542		
HT	(max)	8.89	0.350	9.70	0.382		

Physical Characteristics

Cross Section (A)	Path Length (l)	Window Area (Wa)	Volume (V)	Breakdown Voltage (Vac)
0.388 cm ²	5.88 cm	1.49 cm ²	2.281 cm ³	1,000
0.060 in ²	2.31 in	294,060 cmil	0.1392 in ³	

Winding Information

0% Winding length/turn (cm)		
2.993		
40% winding factor Surface Area (cm ²)		
26.78		
40% Wound Di.(mm)		
OD	ID	HT
27.76	9.02	13.81

Typical DC Bias Performance

